



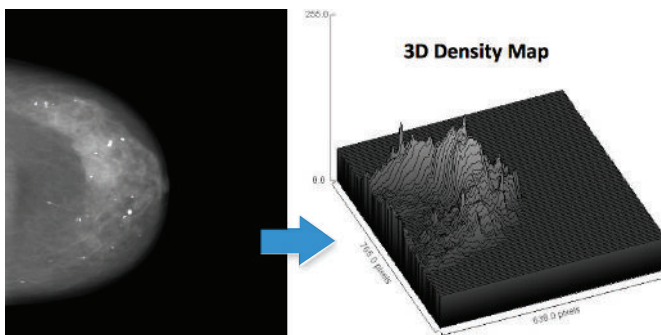
Volpara *measures* breast density



Volpara™ Aids in Objective Breast Density Assessment

By using DICOM "For Processing" image data from a digital mammography system, the Volpara algorithm calculates an objective measurement of a woman's breast density by utilizing volumetric parameters.

The result is an output that includes the fibroglandular tissue volume, total breast tissue volume, overall percentage of breast density, and a Volpara Density Grade.



When integrated into the mammography workflow of your facility, the Volpara results can be sent to a RIS, PACS, or mammography reporting system.

Volpara™ for Volumetric Breast Density

- An objective and reproducible way to standardize breast density assessment
- Proven to reduce inter/intra observer variability associated with breast density assessment
- Scientifically correlated with BI-RADS™ Breast Density Categories
- Seamlessly integrated into clinical workflow allowing for increase in productivity
- Vendor neutral to provide cross-platform standardization and further maximize digital mammography investment

Breast Density Facts

More than 45% of mammography age women have dense breasts.

Mammography, is less than 60% sensitive in dense breasts.

Risk of developing breast cancer is 4-6 times greater in extremely dense breasts than fatty breasts.

Cancer recurrence is more likely in women with dense breasts.

Radiologists overestimate breast density 7-37%.

Complete supporting documentation is available at www.volparadensity.com/clinicians/research-papers/